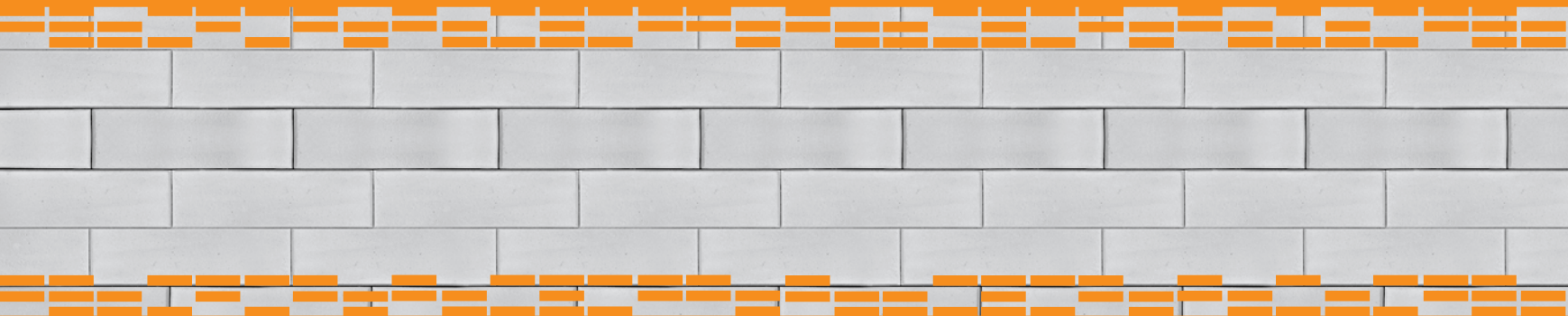


FAVETON®

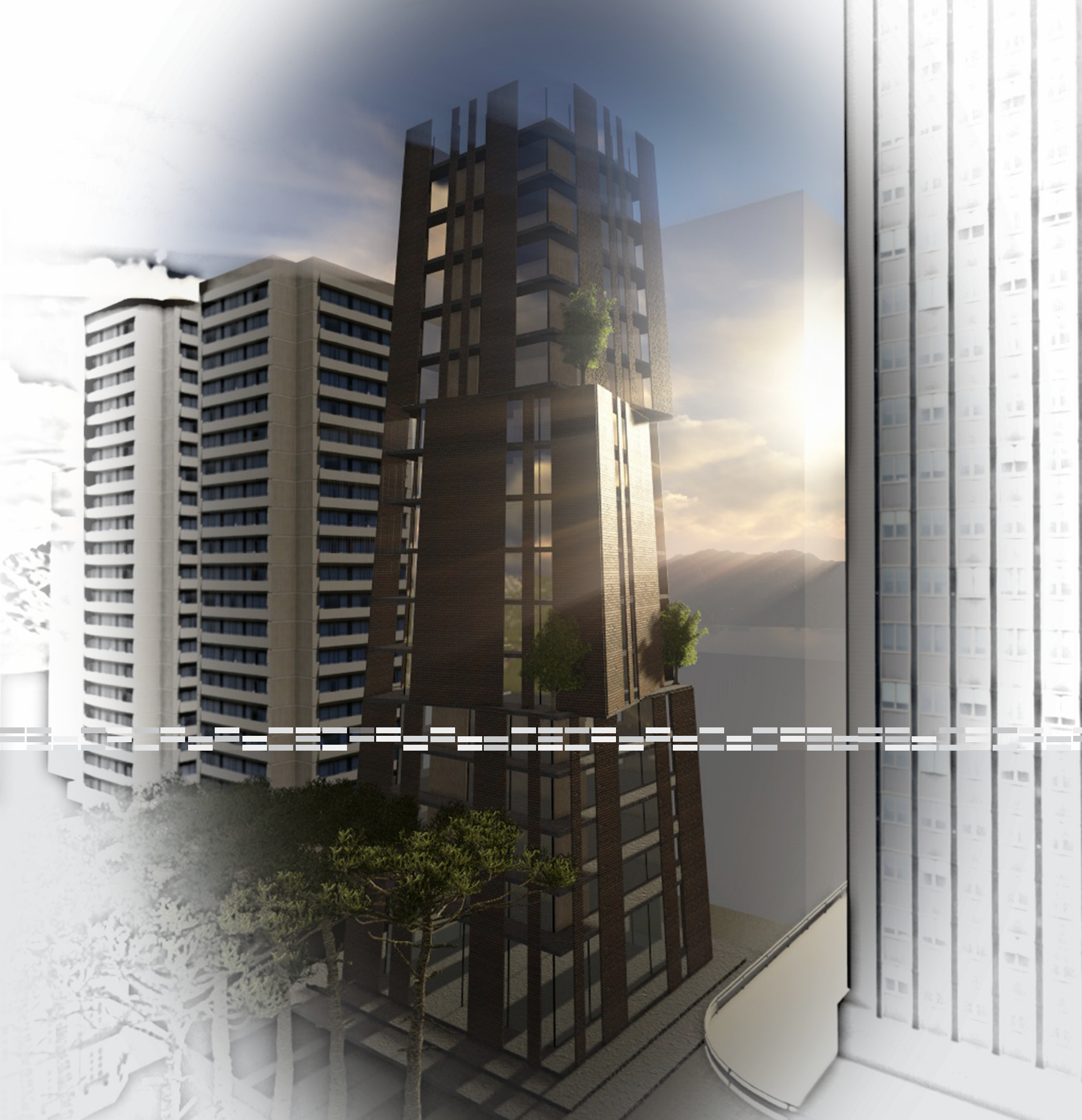
TERRACOTA

F A C A D E V E N T I L A T E D S Y S T E M



BRICK TILE SYSTEM

WWW.FAVETON.COM



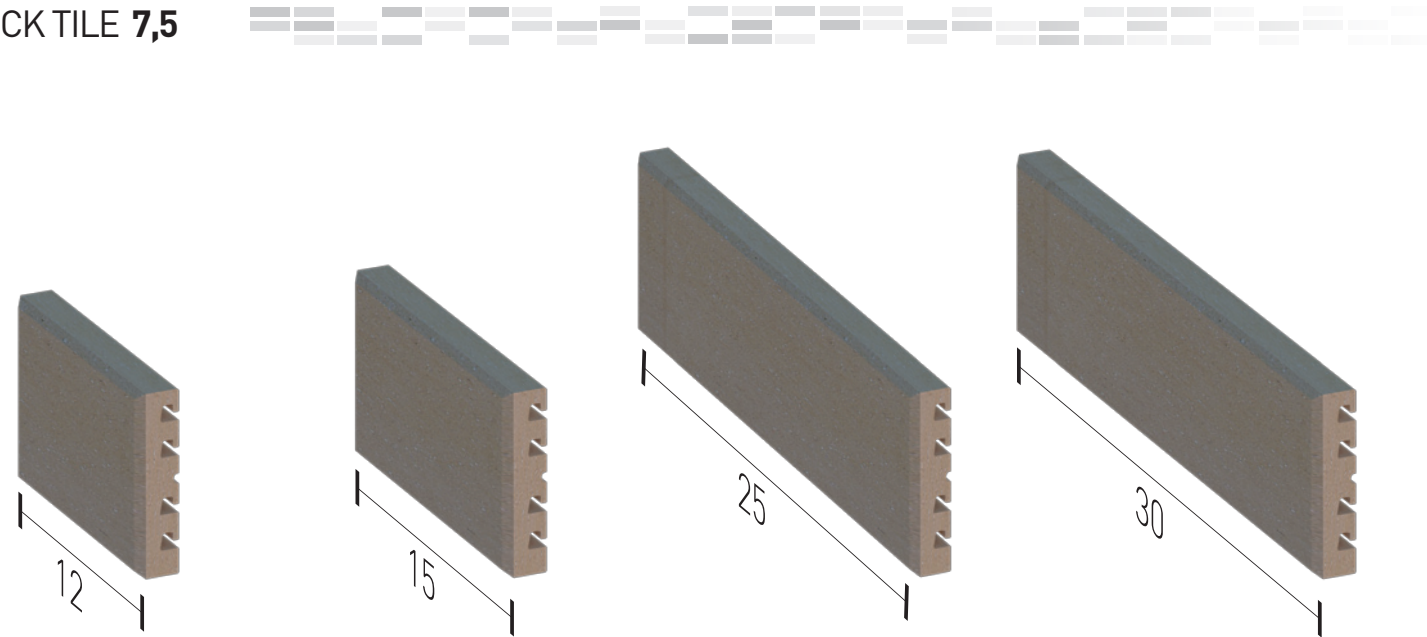
 BRICK TILE
SYSTEM

FAVETON MAKES IT POSSIBLE...

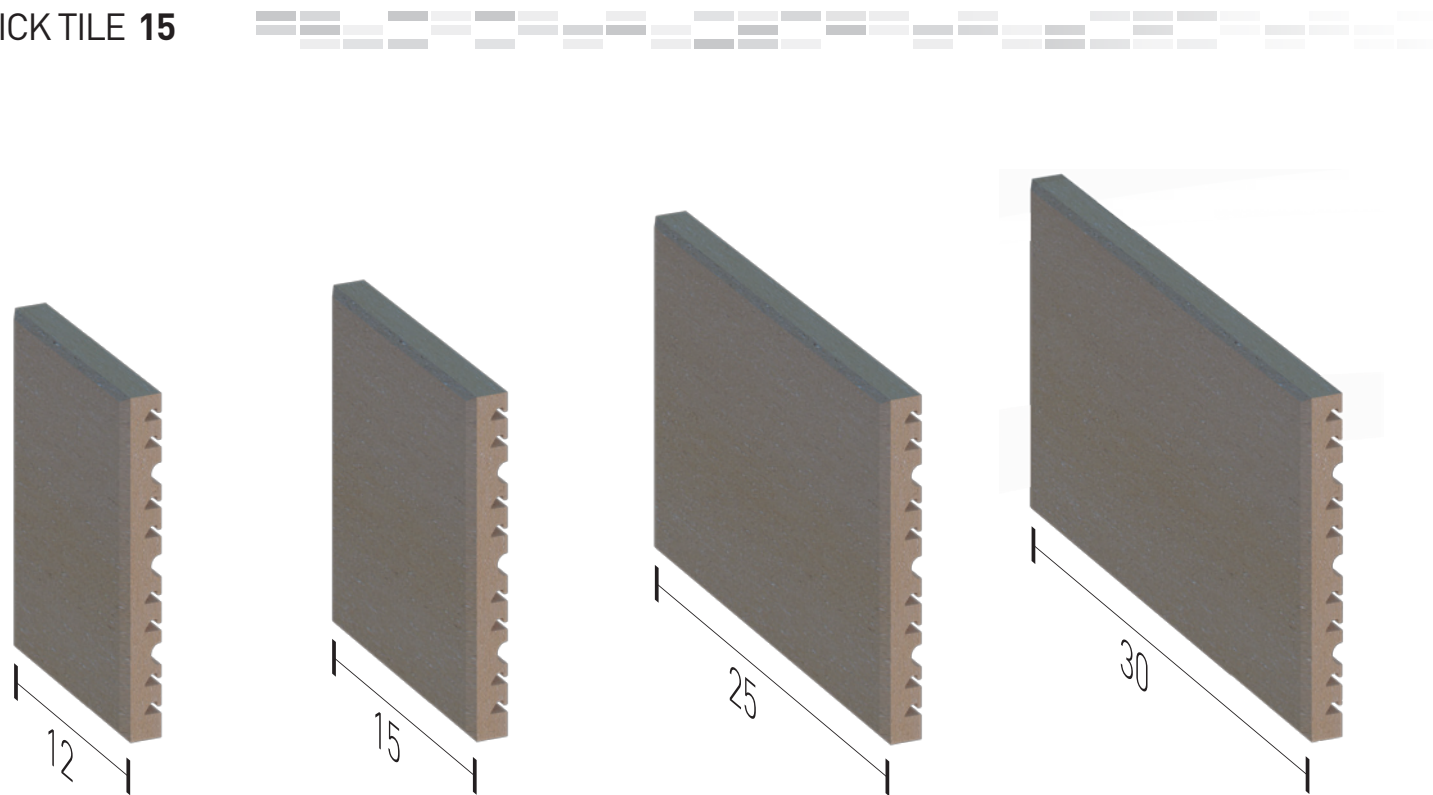
“Without leaving our roots behind and because we do not forget where we belong to, a land that has been historically influenced by mudejar art and a rich ceramic tradition, we could not either forget about culture and aesthetics found on these brick facades.”

FAVETON LAUNCHES ONTO THE MARKET A NEW SYSTEM OF VENTILATED FACADES USING FACE BRICK PLATELETS.

BRICK TILE 7,5



BRICK TILE 15



SECTION	MEASURE			WEIGHT m ² .	UNIT m ² .	CONTAINER	CONTAINER m ² .	PALLET m ² .
	L	A	...					
	29	7,5	1,6	28	40	28	0,7	32
	25	7,5	1,6	28	47	34	0,7	32
	14	7,5	1,6	28	78	56	0,7	32
	12	7,5	1,6	28	90	68	0,7	32
	29	15	1,6	28	20	14	0,7	32
	25	15	1,6	28	24	17	0,7	32
	14	15	1,6	28	42	28	0,7	32
	12	15	1,6	28	48	34	0,7	32

TABLE OF PROPERTIES.

PROPERTIES	RULE	FAVETON VALUES
Tolerances.	ISO 10545-2	- Length (Extrusion Direction) +/- 4 mm* - Height +/- 3 mm* - Thickness +/- 15%* - Straightness (Extrusion Direction) +/- 0,5% of length - Rectangulativity +/- 2% of length - Surface flatness of diagonal or height +/- 1%
(*) According to dimensions of format.		
Water absorption.	ISO 10545-3	3-6% depending on color
Bending strength.	ISO 10545-4	14-18 N/mm ² depending on color
Linear thermal expansion.	ISO 10545-8	Coefficient of expansion 5,7 x 10 ⁻⁶ (K ⁻¹). Test ITC.
Resistance to thermal shock.	ISO 10545-9	Unalterable up to 145°C, according to test.
Moisture expansion.	ISO 10545-10	Mean value <0,1 mm/m, maximum value <0,1 mm/m. Test ITC
Frost resistance.	ISO 10545-12	Unalterable according to test (100 cycles + 5°C a -5°C).
Chemical resistance.	ISO 10545-13	Only applicable in corrosive conditions. At least G and B class.
Stain resistance.	ISO 10545-14	At least CLASS 3. (Enamelled)
Enamelled.		BRICK TILE.

WITH FAVETON, YOU CAN CHOOSE FROM DIFFERENT MEASUREMENTS MADE TO ORDER.

NATURE
COLOURS



NATURE **MA 04**



NATURE **MA 04 A**



NATURE **NA 01**



NATURE **NA 01 A**



NATURE **R 5005**



NATURE **R 5005 A**



NATURE **NA 01 TE 02**



NATURE **NA 01 TE 02 A**



NATURE **R 21**



NATURE **R 21 A**



NATURE **NA 01 B**



NATURE **NA 01 B A**



NATURE **R 5005 TE 02**



NATURE **R 5005 TE 02 A**



NATURE **R 50**



NATURE **R 50 A**



NATURE **R 04**



NATURE **R 04 A**

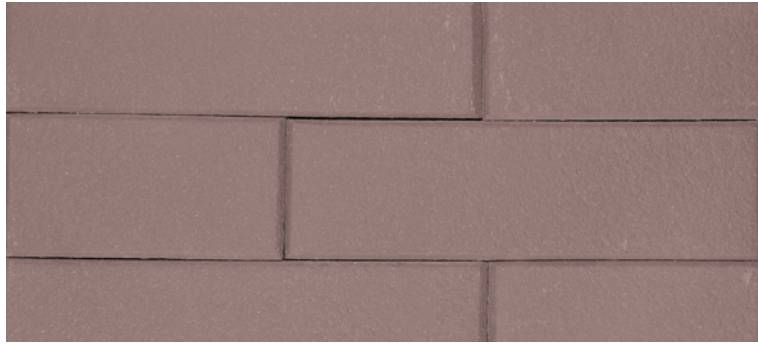


NATURE **RO 04 MA 09**



NATURE **RO 04 MA 09 A**

ENAMELLED
COLOURS



NATURE **MA 09**



NATURE **MA 09 A**



BS 05 ENAMELLED



BS 07 ENAMELLED



NATURE **R 21 MA 09**



NATURE **R 21 MA 09 A**



ME PLATA ENAMELLED



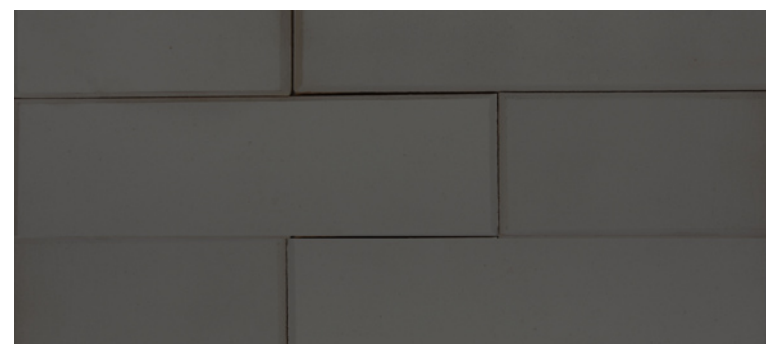
ME N ENAMELLED



NATURE **GR 00**



NATURE **GR 00 A**



NE 04 ENAMELLED



ME COBRE ENAMELLED



NATURE **GR 05**



NATURE **GR 05 A**

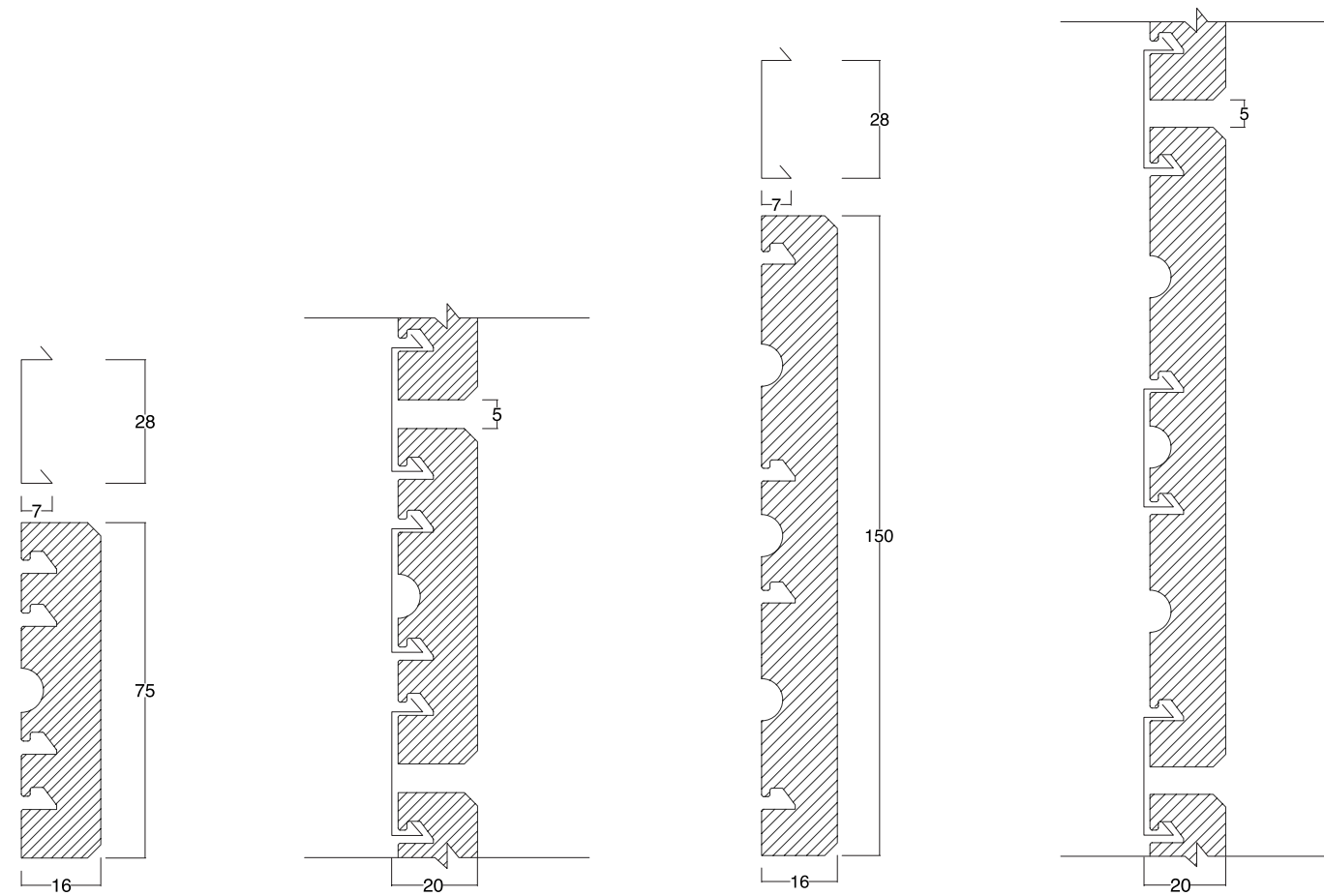


FAVETON PREPARES ANY COLOUR YOU MAY WANT BY REQUEST AS LONG AS THERE IS A MINIMUM VOLUME OF PRODUCTION. IT WILL TAKE AN ADDITIONAL CHARGE FOR SPECIFICALLY MADE COLOURS.

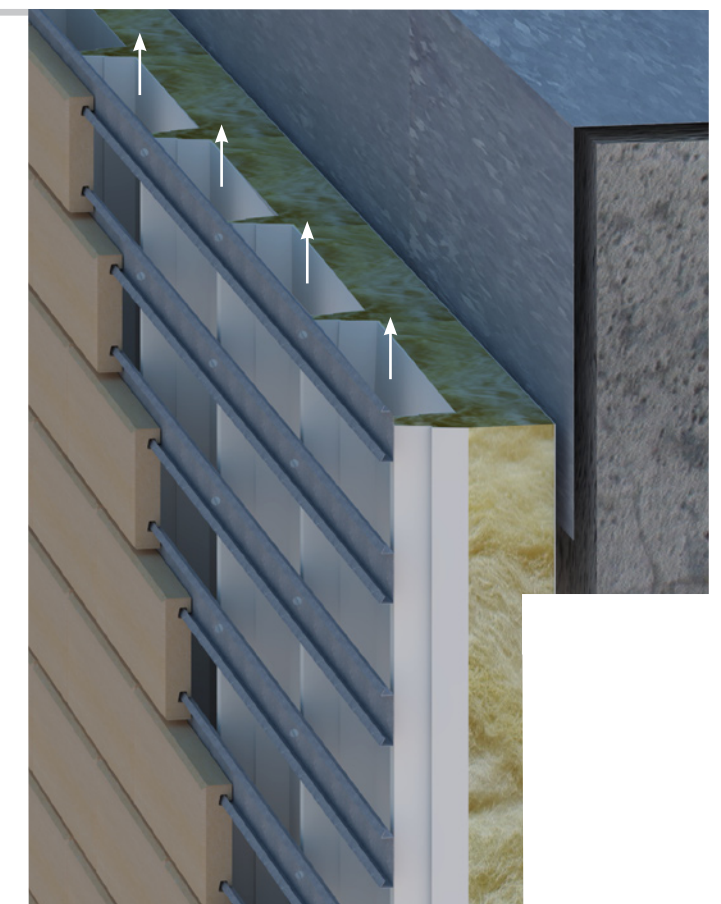
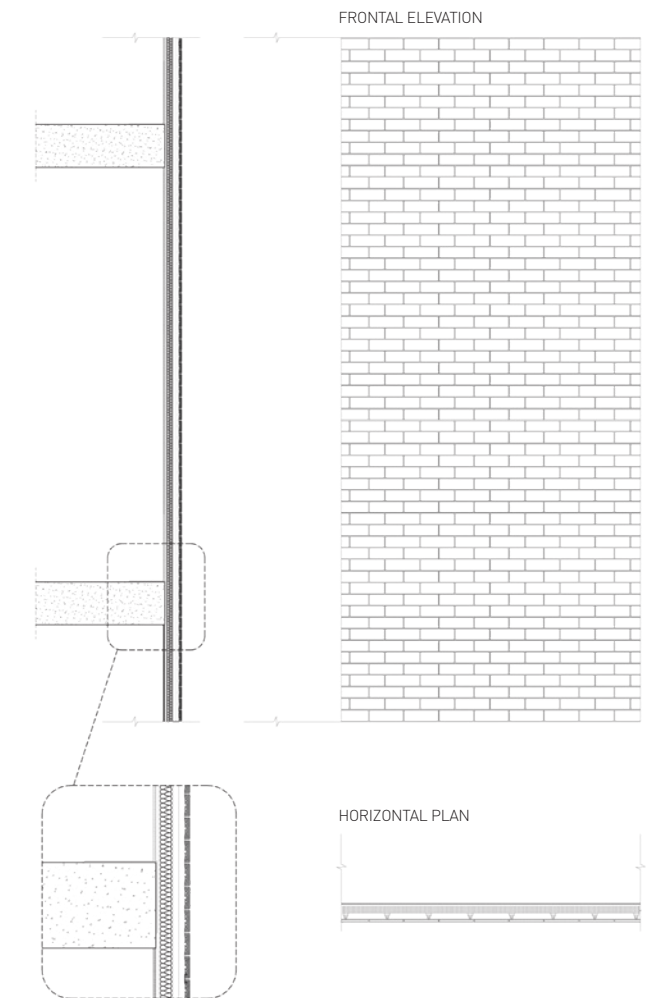
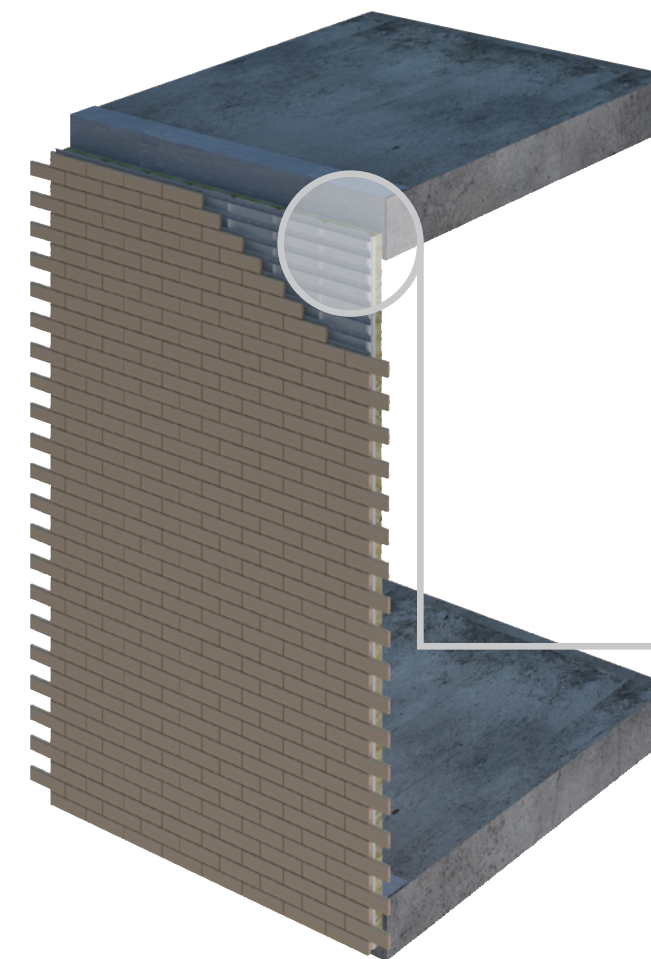
ASSEMBLY SYSTEMS

The ceramic tiles's distinctive design and their profile allow the production of different joints and ways to place the facade.

The joints can be left open in order to get proper ventilation or, on the other hand, they can be filled and sealed with filler made for this specific purpose.

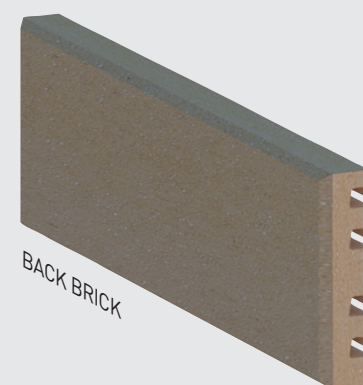


VENTILATED BRICK FACADE

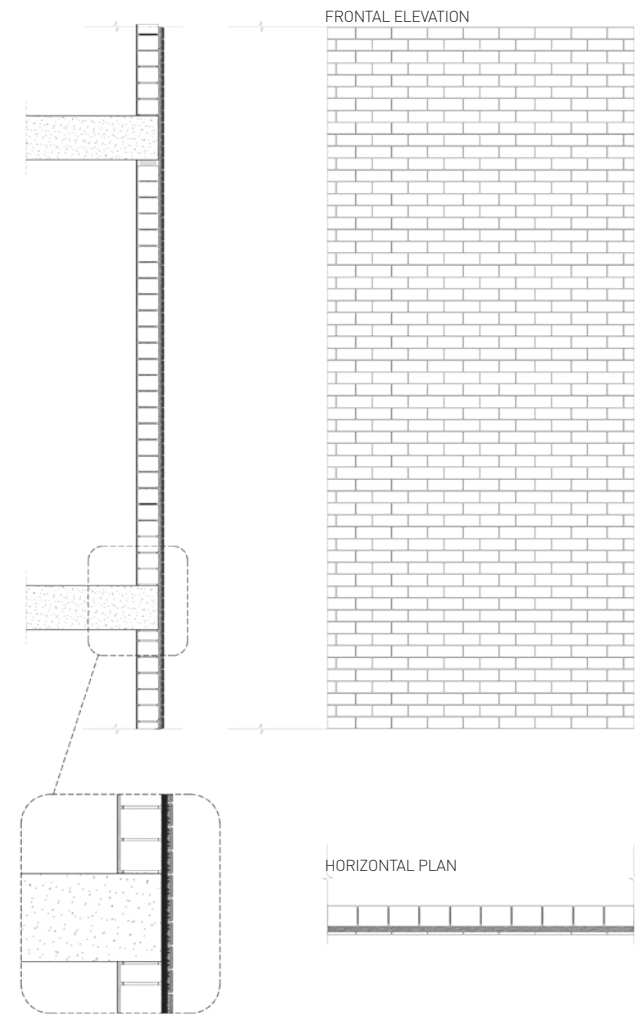
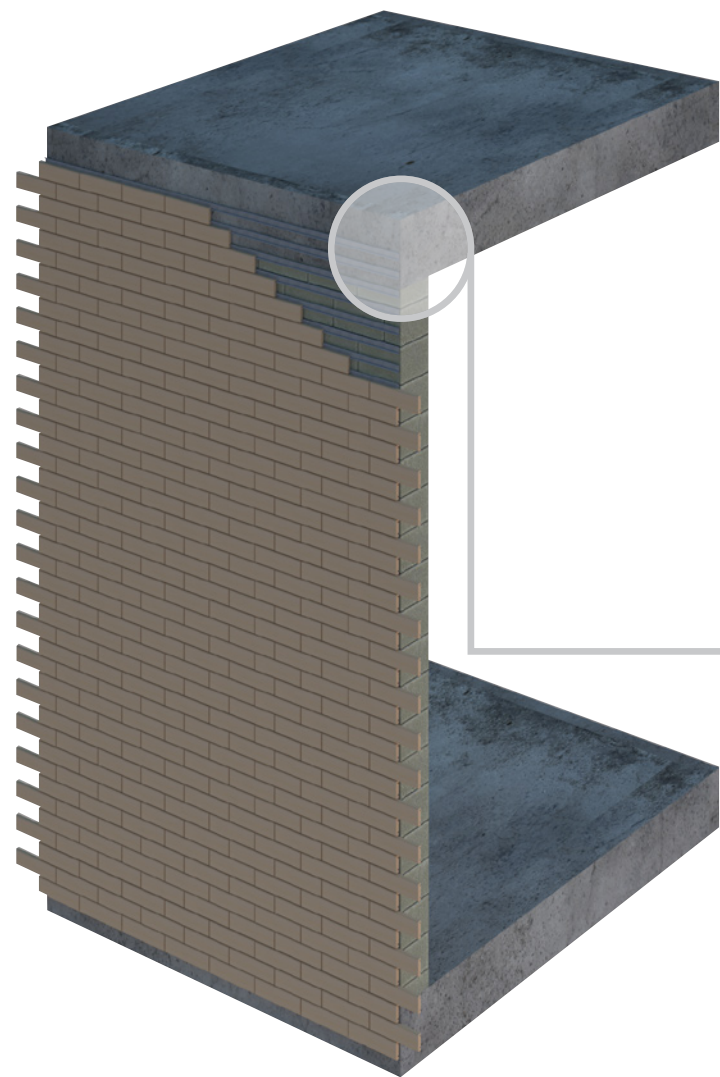


It is made up of a ribbed panel or a sandwich panel that works as a mainsheet and lashing, over which purlins that sustain faveton ceramic tiles are screwed.

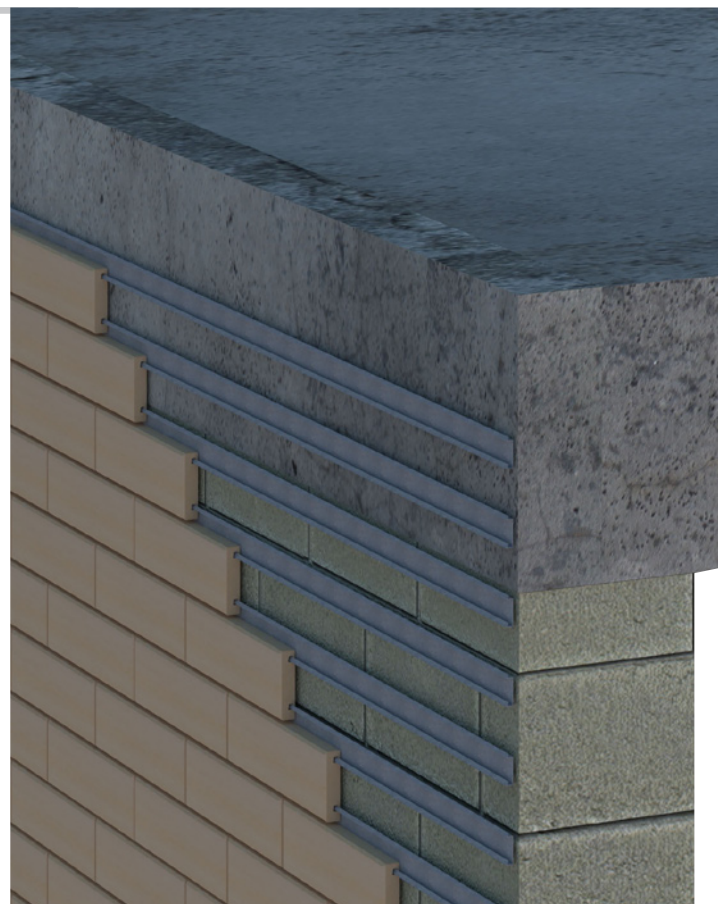
The spaces between ribbed sections from the panels allow the vertical ventilation of the facade.



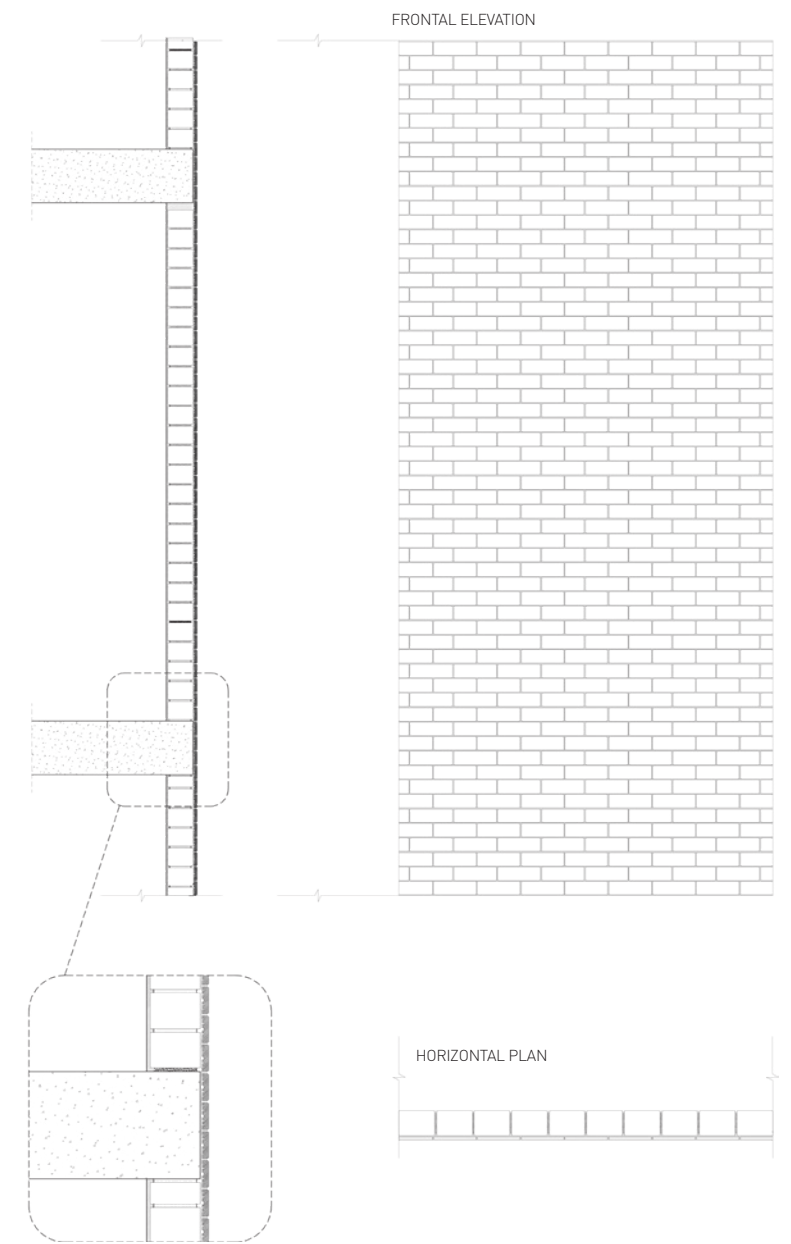
BRICK MECHANICAL FIXATION



The system is formed by purlins that are screwed on directly over the surface or over the existing wall above which FAVETON face tiles are placed.

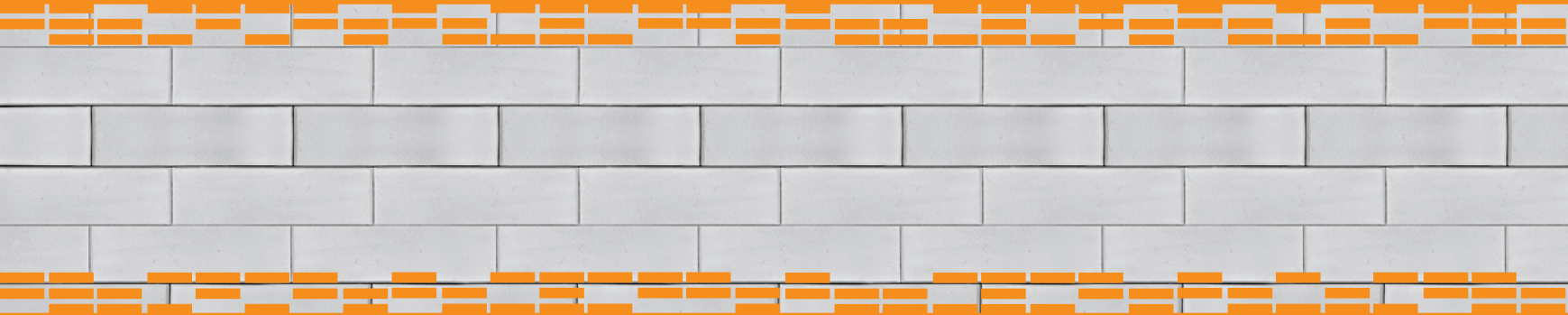


BRICK CLADDING



The traditional method of bonding takes care on the effectiveness of the adhesive with the ceramic and the surface over which it is applied.





FAVETON[®]

TERRACOTA

TEL. (+34) 976 140 311 FAX. (+34) 976 141 164 INFO@FAVETON.COM WWW.FAVETON.COM